

Table with 3 columns: NUMBER, BEARING, DISTANCE. Lists bearings and distances for lots L1 through L24.

Table with 3 columns: NUMBER, BEARING, DISTANCE. Lists bearings and distances for lots L25 through L42.

Table with 3 columns: NUMBER, BEARING, DISTANCE. Lists bearings and distances for lots L43 through L60.

Table with 3 columns: NUMBER, BEARING, DISTANCE. Lists bearings and distances for lots L61 through L78.

Table with 3 columns: NUMBER, BEARING, DISTANCE. Lists bearings and distances for lots L79 through L96.

Table with 3 columns: NUMBER, BEARING, DISTANCE. Lists bearings and distances for lots L97 through L114.

Table with 3 columns: NUMBER, BEARING, DISTANCE. Lists bearings and distances for lots L115 through L132.

Table with 3 columns: NUMBER, BEARING, DISTANCE. Lists bearings and distances for lots L133 through L150.

Table with 4 columns: NUMBER, RADIUS, ARC, CHORD, CHORD DIRECTION. Lists data for lots C1 through C20.

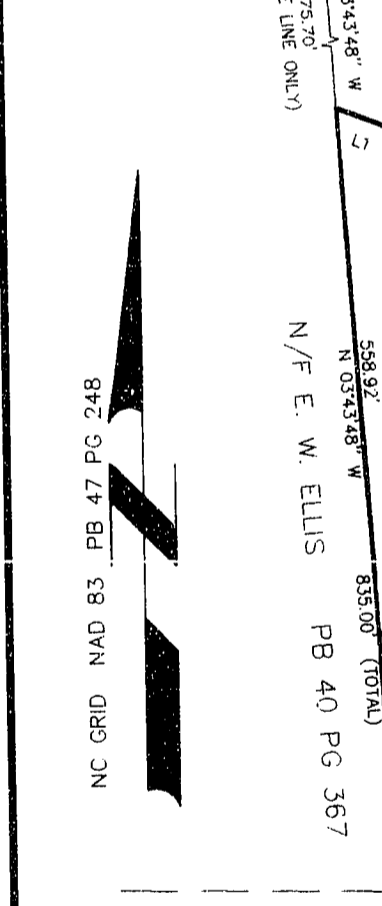
Table with 4 columns: NUMBER, RADIUS, ARC, CHORD, CHORD DIRECTION. Lists data for lots C21 through C40.

Table with 4 columns: NUMBER, RADIUS, ARC, CHORD, CHORD DIRECTION. Lists data for lots C41 through C58.

NOTE: EACH OF THESE LOTS MAY REQUIRE THE USE OF SEWAGE PUMPS OR LOW PRESSURE PIPE SEPTIC TANK SYSTEMS UNLESS OTHERWISE APPROVED BY JOHNSTON COUNTY ENVIRONMENTAL HEALTH.

Only North Carolina Department Of Transportation approved structures are to be constructed on public right of way.

EIP CONTROL CORNER N = 706915.4029 E = 2163758.9347 (NAD 83)



SMITH RIDGE SUBDIVISION PB 25 PG 327

EXISTING IRON STAKE CONTROL CORNER

PROPERTY SHOWN HEREON IS PARTIALLY LOCATED IN A FEMA DESIGNATED FLOOD ZONE AS SHOWN HEREON.

PROPERTY SHOWN HEREON IS XX IS NOT LOCATED WITHIN THE JOHNSTON COUNTY WATERSHED PROTECTION AREA.

MINIMUM BUILDING SETBACK LIMITS: FRONT 35 FEET, SIDE 15 FEET, REAR 30 FEET.

SITE DATA: TOTAL ACRES IN TRACT 206.07 AC +/-, TOTAL ACRES IN PHASE 1 89.85 AC +/-.

Table with 4 columns: NUMBER, RADIUS, ARC, CHORD, CHORD DIRECTION. Lists data for lots C67 through C70.

Table with 3 columns: NUMBER, BEARING, DISTANCE. Lists bearings and distances for lots L142 through L146.

Table with 4 columns: NUMBER, RADIUS, ARC, CHORD, CHORD DIRECTION. Lists data for lots C71 through C74.

Table with 4 columns: NUMBER, RADIUS, ARC, CHORD, CHORD DIRECTION. Lists data for lots C75 through C78.

Table with 4 columns: NUMBER, RADIUS, ARC, CHORD, CHORD DIRECTION. Lists data for lots C79 through C82.

Table with 4 columns: NUMBER, RADIUS, ARC, CHORD, CHORD DIRECTION. Lists data for lots C83 through C86.

Table with 4 columns: NUMBER, RADIUS, ARC, CHORD, CHORD DIRECTION. Lists data for lots C87 through C90.

Table with 4 columns: NUMBER, RADIUS, ARC, CHORD, CHORD DIRECTION. Lists data for lots C91 through C94.

Table with 4 columns: NUMBER, RADIUS, ARC, CHORD, CHORD DIRECTION. Lists data for lots C95 through C98.

Table with 4 columns: NUMBER, RADIUS, ARC, CHORD, CHORD DIRECTION. Lists data for lots C99 through C102.

Table with 4 columns: NUMBER, RADIUS, ARC, CHORD, CHORD DIRECTION. Lists data for lots C103 through C106.

Table with 4 columns: NUMBER, RADIUS, ARC, CHORD, CHORD DIRECTION. Lists data for lots C107 through C110.

Table with 4 columns: NUMBER, RADIUS, ARC, CHORD, CHORD DIRECTION. Lists data for lots C111 through C114.

Table with 4 columns: NUMBER, RADIUS, ARC, CHORD, CHORD DIRECTION. Lists data for lots C115 through C118.

Table with 4 columns: NUMBER, RADIUS, ARC, CHORD, CHORD DIRECTION. Lists data for lots C119 through C122.

Table with 4 columns: NUMBER, RADIUS, ARC, CHORD, CHORD DIRECTION. Lists data for lots C123 through C126.

Table with 4 columns: NUMBER, RADIUS, ARC, CHORD, CHORD DIRECTION. Lists data for lots C127 through C130.

Table with 4 columns: NUMBER, RADIUS, ARC, CHORD, CHORD DIRECTION. Lists data for lots C131 through C134.

Table with 4 columns: NUMBER, RADIUS, ARC, CHORD, CHORD DIRECTION. Lists data for lots C135 through C138.

Table with 4 columns: NUMBER, RADIUS, ARC, CHORD, CHORD DIRECTION. Lists data for lots C139 through C142.

Table with 4 columns: NUMBER, RADIUS, ARC, CHORD, CHORD DIRECTION. Lists data for lots C143 through C146.

Table with 4 columns: NUMBER, RADIUS, ARC, CHORD, CHORD DIRECTION. Lists data for lots C147 through C150.

Table with 4 columns: NUMBER, RADIUS, ARC, CHORD, CHORD DIRECTION. Lists data for lots C151 through C154.

Table with 4 columns: NUMBER, RADIUS, ARC, CHORD, CHORD DIRECTION. Lists data for lots C155 through C158.

Table with 4 columns: NUMBER, RADIUS, ARC, CHORD, CHORD DIRECTION. Lists data for lots C159 through C162.

Table with 4 columns: NUMBER, RADIUS, ARC, CHORD, CHORD DIRECTION. Lists data for lots C163 through C166.

Table with 4 columns: NUMBER, RADIUS, ARC, CHORD, CHORD DIRECTION. Lists data for lots C167 through C170.

Table with 4 columns: NUMBER, RADIUS, ARC, CHORD, CHORD DIRECTION. Lists data for lots C171 through C174.

Table with 4 columns: NUMBER, RADIUS, ARC, CHORD, CHORD DIRECTION. Lists data for lots C175 through C178.

Table with 4 columns: NUMBER, RADIUS, ARC, CHORD, CHORD DIRECTION. Lists data for lots C179 through C182.

Table with 4 columns: NUMBER, RADIUS, ARC, CHORD, CHORD DIRECTION. Lists data for lots C183 through C186.

Table with 4 columns: NUMBER, RADIUS, ARC, CHORD, CHORD DIRECTION. Lists data for lots C187 through C190.

Table with 4 columns: NUMBER, RADIUS, ARC, CHORD, CHORD DIRECTION. Lists data for lots C191 through C194.

Table with 4 columns: NUMBER, RADIUS, ARC, CHORD, CHORD DIRECTION. Lists data for lots C195 through C198.

Table with 4 columns: NUMBER, RADIUS, ARC, CHORD, CHORD DIRECTION. Lists data for lots C199 through C202.

Table with 4 columns: NUMBER, RADIUS, ARC, CHORD, CHORD DIRECTION. Lists data for lots C203 through C206.

Table with 4 columns: NUMBER, RADIUS, ARC, CHORD, CHORD DIRECTION. Lists data for lots C207 through C210.

Table with 4 columns: NUMBER, RADIUS, ARC, CHORD, CHORD DIRECTION. Lists data for lots C211 through C214.

Table with 4 columns: NUMBER, RADIUS, ARC, CHORD, CHORD DIRECTION. Lists data for lots C215 through C218.

Table with 4 columns: NUMBER, RADIUS, ARC, CHORD, CHORD DIRECTION. Lists data for lots C219 through C222.

Table with 4 columns: NUMBER, RADIUS, ARC, CHORD, CHORD DIRECTION. Lists data for lots C223 through C226.

Table with 4 columns: NUMBER, RADIUS, ARC, CHORD, CHORD DIRECTION. Lists data for lots C227 through C230.

Table with 4 columns: NUMBER, RADIUS, ARC, CHORD, CHORD DIRECTION. Lists data for lots C231 through C234.

Table with 4 columns: NUMBER, RADIUS, ARC, CHORD, CHORD DIRECTION. Lists data for lots C235 through C238.

Table with 4 columns: NUMBER, RADIUS, ARC, CHORD, CHORD DIRECTION. Lists data for lots C239 through C242.

Table with 4 columns: NUMBER, RADIUS, ARC, CHORD, CHORD DIRECTION. Lists data for lots C243 through C246.

Table with 4 columns: NUMBER, RADIUS, ARC, CHORD, CHORD DIRECTION. Lists data for lots C247 through C250.

Table with 4 columns: NUMBER, RADIUS, ARC, CHORD, CHORD DIRECTION. Lists data for lots C251 through C254.

Table with 4 columns: NUMBER, RADIUS, ARC, CHORD, CHORD DIRECTION. Lists data for lots C255 through C258.

Table with 4 columns: NUMBER, RADIUS, ARC, CHORD, CHORD DIRECTION. Lists data for lots C259 through C262.

Table with 4 columns: NUMBER, RADIUS, ARC, CHORD, CHORD DIRECTION. Lists data for lots C263 through C266.

Table with 4 columns: NUMBER, RADIUS, ARC, CHORD, CHORD DIRECTION. Lists data for lots C267 through C270.

Table with 4 columns: NUMBER, RADIUS, ARC, CHORD, CHORD DIRECTION. Lists data for lots C271 through C274.

Table with 4 columns: NUMBER, RADIUS, ARC, CHORD, CHORD DIRECTION. Lists data for lots C275 through C278.

Table with 4 columns: NUMBER, RADIUS, ARC, CHORD, CHORD DIRECTION. Lists data for lots C279 through C282.

Table with 4 columns: NUMBER, RADIUS, ARC, CHORD, CHORD DIRECTION. Lists data for lots C283 through C286.

Table with 4 columns: NUMBER, RADIUS, ARC, CHORD, CHORD DIRECTION. Lists data for lots C287 through C290.

Table with 4 columns: NUMBER, RADIUS, ARC, CHORD, CHORD DIRECTION. Lists data for lots C291 through C294.

Table with 4 columns: NUMBER, RADIUS, ARC, CHORD, CHORD DIRECTION. Lists data for lots C295 through C298.

Table with 4 columns: NUMBER, RADIUS, ARC, CHORD, CHORD DIRECTION. Lists data for lots C299 through C302.

Table with 4 columns: NUMBER, RADIUS, ARC, CHORD, CHORD DIRECTION. Lists data for lots C303 through C306.

Table with 4 columns: NUMBER, RADIUS, ARC, CHORD, CHORD DIRECTION. Lists data for lots C307 through C310.

Table with 4 columns: NUMBER, RADIUS, ARC, CHORD, CHORD DIRECTION. Lists data for lots C311 through C314.

Table with 4 columns: NUMBER, RADIUS, ARC, CHORD, CHORD DIRECTION. Lists data for lots C315 through C318.

Table with 4 columns: NUMBER, RADIUS, ARC, CHORD, CHORD DIRECTION. Lists data for lots C319 through C322.

Table with 4 columns: NUMBER, RADIUS, ARC, CHORD, CHORD DIRECTION. Lists data for lots C323 through C326.

Table with 4 columns: NUMBER, RADIUS, ARC, CHORD, CHORD DIRECTION. Lists data for lots C327 through C330.

Table with 4 columns: NUMBER, RADIUS, ARC, CHORD, CHORD DIRECTION. Lists data for lots C331 through C334.

Table with 4 columns: NUMBER, RADIUS, ARC, CHORD, CHORD DIRECTION. Lists data for lots C335 through C338.

Table with 4 columns: NUMBER, RADIUS, ARC, CHORD, CHORD DIRECTION. Lists data for lots C339 through C342.

Table with 4 columns: NUMBER, RADIUS, ARC, CHORD, CHORD DIRECTION. Lists data for lots C343 through C346.

Table with 4 columns: NUMBER, RADIUS, ARC, CHORD, CHORD DIRECTION. Lists data for lots C347 through C350.

Table with 4 columns: NUMBER, RADIUS, ARC, CHORD, CHORD DIRECTION. Lists data for lots C351 through C354.

Table with 4 columns: NUMBER, RADIUS, ARC, CHORD, CHORD DIRECTION. Lists data for lots C355 through C358.

Table with 4 columns: NUMBER, RADIUS, ARC, CHORD, CHORD DIRECTION. Lists data for lots C359 through C362.

Table with 4 columns: NUMBER, RADIUS, ARC, CHORD, CHORD DIRECTION. Lists data for lots C363 through C366.

Table with 4 columns: NUMBER, RADIUS, ARC, CHORD, CHORD DIRECTION. Lists data for lots C367 through C370.

Table with 4 columns: NUMBER, RADIUS, ARC, CHORD, CHORD DIRECTION. Lists data for lots C371 through C374.

Table with 4 columns: NUMBER, RADIUS, ARC, CHORD, CHORD DIRECTION. Lists data for lots C375 through C378.

Table with 4 columns: NUMBER, RADIUS, ARC, CHORD, CHORD DIRECTION. Lists data for lots C379 through C382.

Table with 4 columns: NUMBER, RADIUS, ARC, CHORD, CHORD DIRECTION. Lists data for lots C383 through C386.

Table with 4 columns: NUMBER, RADIUS, ARC, CHORD, CHORD DIRECTION. Lists data for lots C387 through C390.

Table with 4 columns: NUMBER, RADIUS, ARC, CHORD, CHORD DIRECTION. Lists data for lots C391 through C394.

Table with 4 columns: NUMBER, RADIUS, ARC, CHORD, CHORD DIRECTION. Lists data for lots C395 through C398.

Table with 4 columns: NUMBER, RADIUS, ARC, CHORD, CHORD DIRECTION. Lists data for lots C399 through C402.

Table with 4 columns: NUMBER, RADIUS, ARC, CHORD, CHORD DIRECTION. Lists data for lots C403 through C406.

Table with 4 columns: NUMBER, RADIUS, ARC, CHORD, CHORD DIRECTION. Lists data for lots C407 through C410.

Table with 4 columns: NUMBER, RADIUS, ARC, CHORD, CHORD DIRECTION. Lists data for lots C411 through C414.

Table with 4 columns: NUMBER, RADIUS, ARC, CHORD, CHORD DIRECTION. Lists data for lots C415 through C418.

Table with 4 columns: NUMBER, RADIUS, ARC, CHORD, CHORD DIRECTION. Lists data for lots C419 through C422.

Table with 4 columns: NUMBER, RADIUS, ARC, CHORD, CHORD DIRECTION. Lists data for lots C423 through C426.

Table with 4 columns: NUMBER, RADIUS, ARC, CHORD, CHORD DIRECTION. Lists data for lots C427 through C430.

Table with 4 columns: NUMBER, RADIUS, ARC, CHORD, CHORD DIRECTION. Lists data for lots C431 through C434.

Table with 4 columns: NUMBER, RADIUS, ARC, CHORD, CHORD DIRECTION. Lists data for lots C435 through C438.

Table with 4 columns: NUMBER, RADIUS, ARC, CHORD, CHORD DIRECTION. Lists data for lots C439 through C442.

Table with 4 columns: NUMBER, RADIUS, ARC, CHORD, CHORD DIRECTION. Lists data for lots C443 through C446.

NOTES: 1) ALL DISTANCES SHOWN ARE HORIZONTAL GROUND DISTANCES. 2) AREAS COMPUTED BY COORDINATE METHOD. 3) PROPERTY SUBJECT TO ALL EASEMENTS AND RESTRICTIONS OF RECORD.

THIS SURVEY CREATES A SUBDIVISION OF LAND IN AN AREA COVERED BY A SUBDIVISION ORDINANCE. DATE 7/25/97 SURVEYOR A. L. Lewis

STATE OF NORTH CAROLINA, JOHNSTON COUNTY. I, A. L. LEWIS, DO HEREBY CERTIFY THAT THIS PLAT WAS DRAWN UNDER MY SUPERVISION FROM AN ACTUAL SURVEY MADE UNDER MY SUPERVISION USING REFERENCES SHOWN HEREON.

THE FOREGOING CERTIFICATE OF LINDA WESTBROOK IS CERTIFIED CORRECT. THIS INSTRUMENT WAS PRESENTED FOR REGISTRATION AND RECORDING THIS 30th DAY OF July 1997 AT 2:50 PM.

REGISTERED IN PB 50 PG 247. ALL OBLIGATIONS AND REQUIREMENTS FOR THE UTILITIES TO SERVE THIS SUBDIVISION, SECTION 1, A NORTH PUBLIC OF THE COUNTY AND STATE AFORESAID.

CERTIFICATE OF APPROVAL FOR RECORDING. THE JOHNSTON COUNTY PLANNING BOARD HEREBY APPROVES THE FINAL PLAT FOR THE SUBDIVISION.

DIVISION OF TRANSPORTATION DIVISION OF HIGHWAYS. PROPOSED SUBDIVISION ROAD CONSTRUCTION STANDARDS CERTIFICATION.

APPROVED: R. K. Murphy, Jr. DISTRICT ENGINEER. DATE: 7-28-97

LEGEND: EIP EXISTING IRON PIPE/STAKE FOUND, IPS IRON PIN SET, EPNK EXISTING PARKER-KALON NAIL.

OWNER: W. GATTIS LEE, P.O. BOX 72, CLAYTON, N. C. 27520, TELEPHONE: (919) 553-6720.

